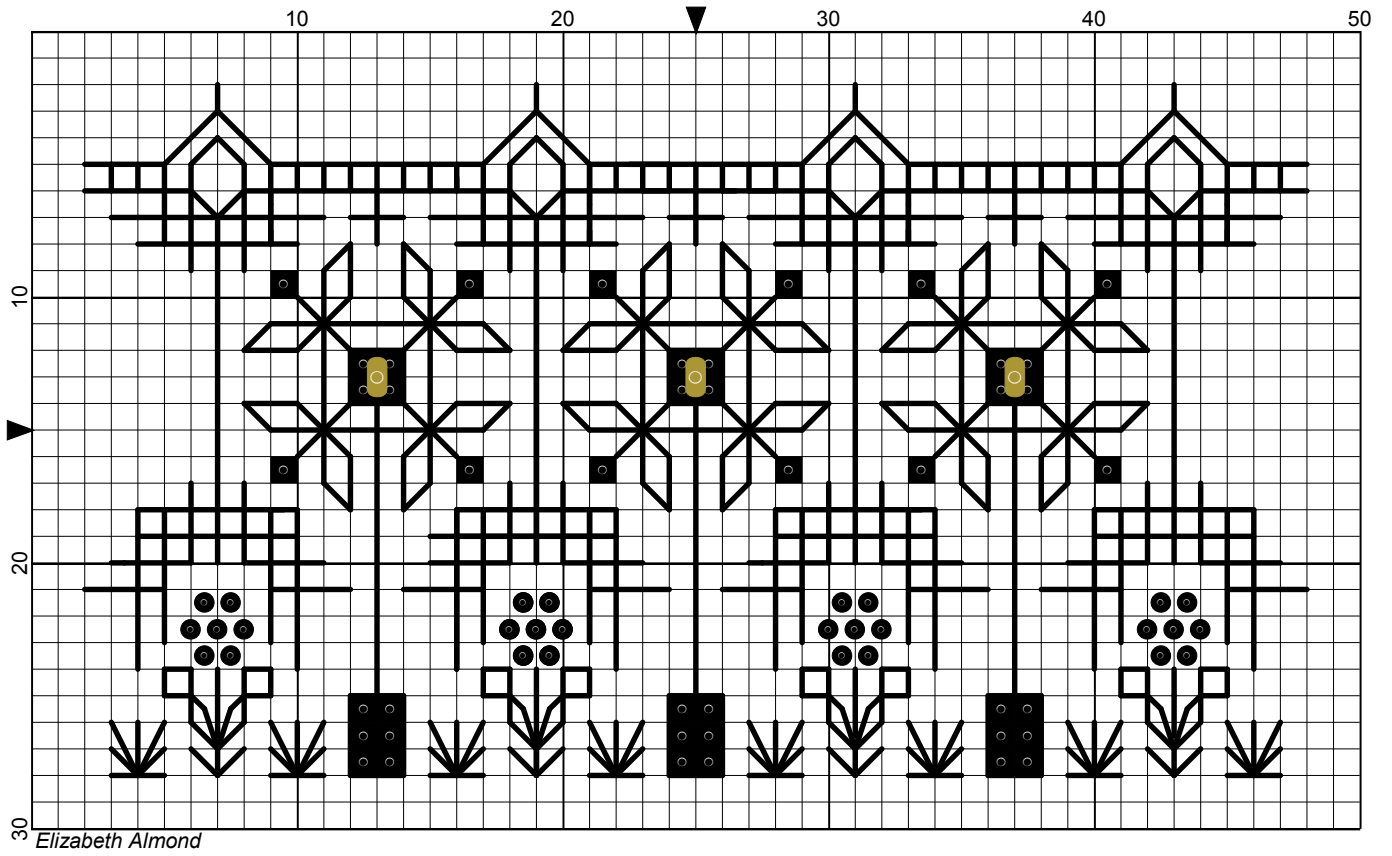


Trellis



Trellis

Author: Elizabeth Almond
Copyright: Elizabeth Almond
Grid Size: 50W x 30H
Design Area: 3.29" x 1.86" (46 x 26 stitches)

Legend:

◻ ◼ [2] DMC-310 ANC-403 black

Backstitch Lines:

———— DMC-310 black

French Knots:

● DMC-310 black

Beads:

● MHG-2011 Mill Hill Glass Beads-Victorian Gold

For Alison,

Happy stitching!

One of a series of 35 small designs printed in The World of Cross Stitch 2010.

Material:

28 count evenweave or 14 count Aida, 7w x 6h inches

DMC stranded cotton:

310 Black, one skein

Mill Hill glass beads 2011 Victorian gold

Tapestry needle No.24

Beading needle

Stitches used:

Back stitch,
Cross stitch,
French knots

Method:

Start from the centre of the design working outwards using ONE strand of cotton for the back stitch and two strands for the cross stitch and french knots. Wrap the thread twice round the needle for the knots. Weave all the ends in carefully to prevent them showing on the right side.

If you any queries please contact:

lizalmond@blackworkjourney.co.uk